

# HDB6VR Electromagnetic Type Residual Current Switch

Standard: IEC/EN 61008-1  
 RCCB Type: A C, A  
 Sensitivity: 10, 30, 100, 300mA



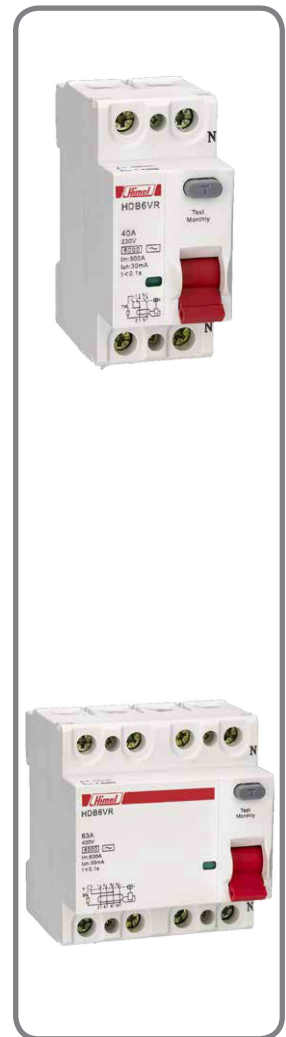
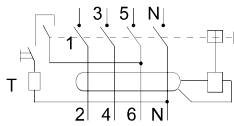
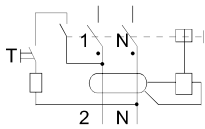
## Function

HDB6VR Electromagnetic Type Residual Current Switch combine the following functions:

- Protection for users against indirect contacts
- Additional protection for users against direct contacts (30mA)
- Protection for electrical installations against insulation faults (fire hazard, etc)

## Order Information

Type	Width (In mod. of 9mm)	Rating (A)	Sensitivity (mA)	Reference		
				AC type	A type	
2P 63AF	4	10	30	HDB6VR210SC	HDB6VR210SA	
			100	HDB6VR210YC	HDB6VR210YA	
			300	HDB6VR210TC	HDB6VR210TA	
		16	30	HDB6VR216SC	HDB6VR216SA	
			100	HDB6VR216YC	HDB6VR216YA	
			300	HDB6VR216TC	HDB6VR216TA	
		25	30	HDB6VR225SC	HDB6VR225SA	
			100	HDB6VR225YC	HDB6VR225YA	
			300	HDB6VR225TC	HDB6VR225TA	
		40	30	HDB6VR240SC	HDB6VR240SA	
			100	HDB6VR240YC	HDB6VR240YA	
			300	HDB6VR240TC	HDB6VR240TA	
63	30	HDB6VR263SC	HDB6VR263SA			
	100	HDB6VR263YC	HDB6VR263YA			
	300	HDB6VR263TC	HDB6VR263TA			
100AF	80	30	HDB6VR280SC	HDB6VR280SA		
		100	HDB6VR280YC	HDB6VR280YA		
		300	HDB6VR280TC	HDB6VR280TA		
	100	30	HDB6VR2100SC	HDB6VR2100SA		
		100	HDB6VR2100YC	HDB6VR2100YA		
		300	HDB6VR2100TC	HDB6VR2100TA		
4P 63AF	8	10	30	HDB6VR410SC	HDB6VR410SA	
			100	HDB6VR410YC	HDB6VR410YA	
			300	HDB6VR410TC	HDB6VR410TA	
		16	30	HDB6VR416SC	HDB6VR416SA	
			100	HDB6VR416YC	HDB6VR416YA	
			300	HDB6VR416TC	HDB6VR416TA	
		25	30	HDB6VR425SC	HDB6VR425SA	
			100	HDB6VR425YC	HDB6VR425YA	
			300	HDB6VR425TC	HDB6VR425TA	
		40	30	HDB6VR440SC	HDB6VR440SA	
			100	HDB6VR440YC	HDB6VR440YA	
			300	HDB6VR440TC	HDB6VR440TA	
		63	30	HDB6VR463SC	HDB6VR463SA	
			100	HDB6VR463YC	HDB6VR463YA	
			300	HDB6VR463TC	HDB6VR463TA	
		100AF	80	30	HDB6VR480SC	HDB6VR480SA
				100	HDB6VR480YC	HDB6VR480YA
				300	HDB6VR480TC	HDB6VR480TA
100	30		HDB6VR4100SC	HDB6VR4100SA		
	100		HDB6VR4100YC	HDB6VR4100YA		
	300		HDB6VR4100TC	HDB6VR4100TA		



# HDB6VR Electromagnetic Type Residual Current Switch

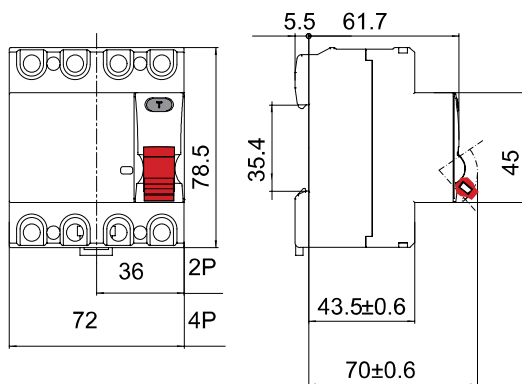
Standard: IEC/EN 61008-1  
 RCCB Type: A C, A  
 Sensitivity: 30, 100, 300mA



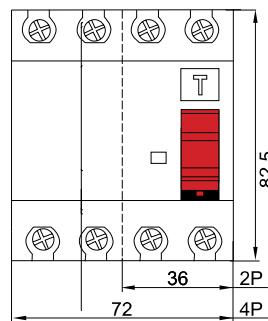
RCCB	HDB6VR Electromagnetic Type Residual Current Switch			
Electrical Features	Standard	IEC/EN 61008-1		
	Certification	TUV,CE,CB		
	Type	AC, A		
	Poles	2P, 4P		
	Rated Current In	10,16, 25, 32, 40, 63, 80, 100A		
	Rated Voltage Ue	230/400V AC		
	Insulation Voltage Ui	500V		
	Sensitivity	10, 30, 100, 300mA		
Mechanical Features	Electrical Durability	1000 times		
	Mechanical Durability	2000 times		
	Overload or Short Circuit Protection	No		
	Tripping Indication	Instantaneous, rated residual operated current, unadjustable		
	Fault Current Indicator	Mechanical indication in the front		
	Protection Degree	2		
	Tropicalization	Treatment 2		
Ambient Temperature	-25°C~+40°C			
Connection	Up to 25mm <sup>2</sup> cables (In≤63A)	Up to 35mm <sup>2</sup> cables (In>63A)		
	Rate current(A)	Screw	Rated Torque (Nm)	Limiting Torque (Nm)
Installation	25-100	M5	2.0	3.2
Mounting	35mm Din-rail			

## Overall Dimensions

Unit: mm



HDB6VR-63



HDB6VR-100

